

**Specification for Asynchronous LED
display controller
LS-Q2-C(HUB75)/LS-Q2-C(50PIN)**



Parameter

Model	LS-Q2-C(HUB75)	LS-Q2-C(50PIN)
Max.Pixels	512*384(16S),1024*192(8S)	512*384(16S),1024*192(8S)
Memory	4G flash(standard), max.128G SD card	
Refresh rate	Max.16KHZ	
Grey level	65536	
Scan mode	Indoor/outdoor, smart scanning setting	
HUB port	12XHUB75	2X50PIN
Communication port	LAN/U-Disk/SD card	
Communication type	LAN,WAN ,3G/4G,WIFI	
Remote management	Support cluster release management remotely; support upgrade system remotely	
Audio port	Onboard integrated sound card,with 6W amplifier, the R/L analog audio	
Video decoding	1080P hardware decoding	
Video format	MOV,AVI,MP4,DVD,ASF,WMV,MKV,RM,RMVB,TS,DAT,MPG,MPEG,VOB	
Audio format	MPEG-1 Layer3,WMA,WMA Pro,AAC,MPEG1/2 Layer 1/2,ADPCM,OGG Vorbis,Dolby Digital AC3,Dolby Digital Plus,RA-COOK,FLAC	
Animation format	JPEG,BMP,GIF,PNG,TIFF	
Text	Support OSD	
Memory port	Provide SD card port,support Max.128G SD card; can use USB2.0 Host to expand U-disk or USB hard-disk	
Timing play	Support	
Sensor port	Support displaying temperature and humidity,auto-adjust brightness and use infrared remote to change program	
Partition	Divide into several areas randomly	
Software	LED MediaPlayer	

Software Feature

1. Support smart routing, easy to scan pixels;
2. Support file detection, automatically clean
3. Adjust the video format by one key
4. Support more than 60 kinds of PlayStyle
5. Easy to edit and operate the programs
6. Support multi-area multi-files, each area supporting multi-files circle play
7. Support Screen para settings and read ,supporting programs circle/repeat play
8. Support timing play, timing turn on/off the screen ,timing brightness adjustment

Hardware Feature

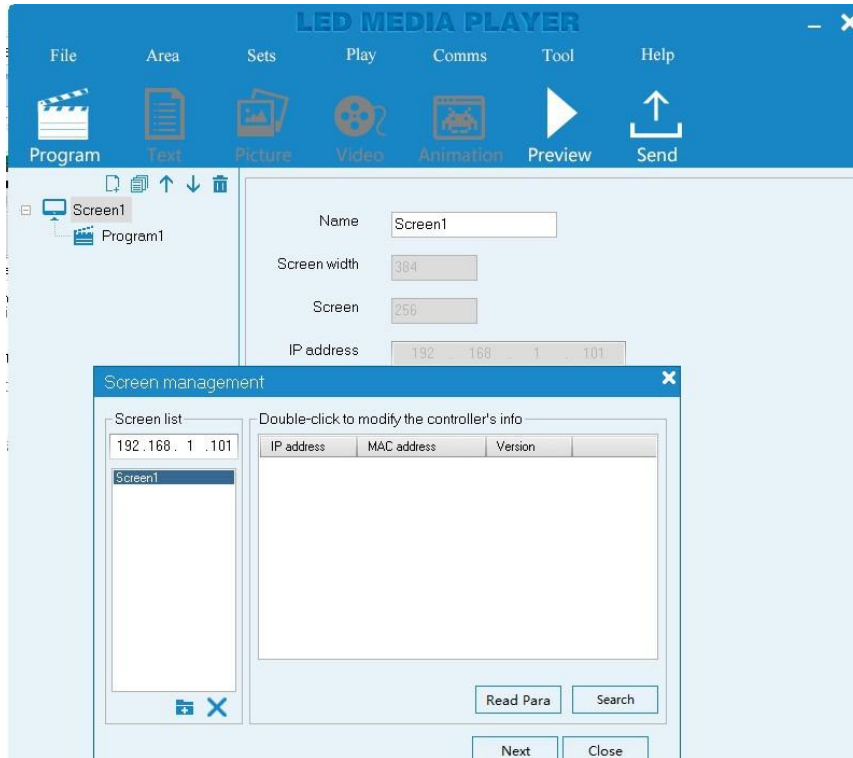
1. Asynchronous full color system, without PC when playing video
2. 1080P HD video hardware decoding ;
3. Huge memory, built-in 4G, can easy to expand to 128G ;

50Pin output port

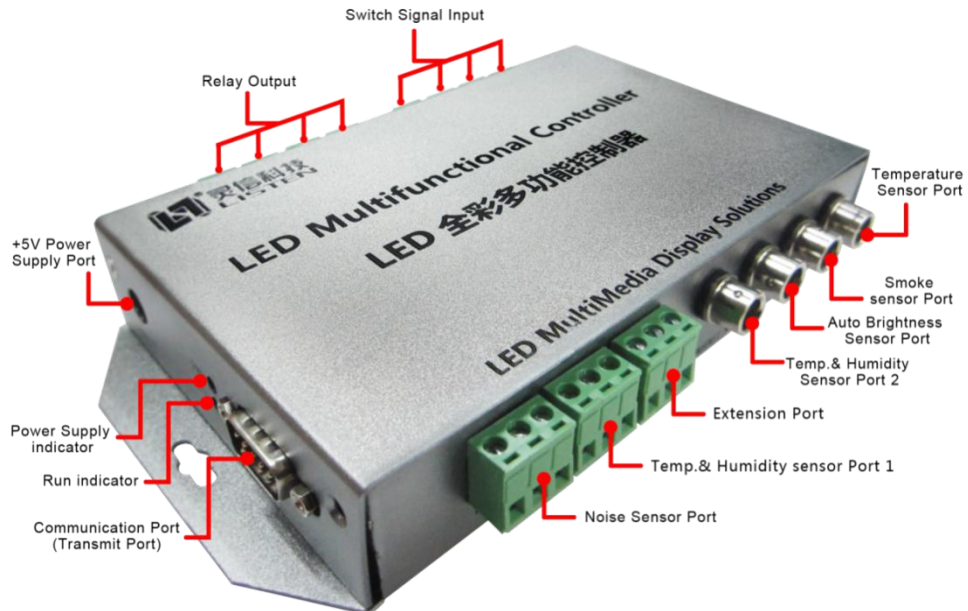
Signal definition for 50Pin output port of LS-Q2-C(50PIN) Asynchronous LED display controller

Signal	Pin number	Description
A	42	Row signal
B	41	Row signal
C	40	Row signal
D	39	Row signal
RCLK	43	Row lock clock
CLK	44	Shift clock
OE	45	Allow display
RD	10,14,18,22,26,30,34,38	Red data
GD	9,13,17,21,25,29,33,37	Green data
BD	8,12,16,20,24,28,32,36	Blue data
VCC	2,4, 47,49	+5V power supply
GND	1,3,5,46,48,50	Ground
NC	6	Empty

Software



Accessories for LS-Q2-C(HUB75)/LS-Q2-C(50PIN)



Picture for LS-F301A Multi-functional Controller

Connection diagram for LS-Q2-C Asynchronous LED display controller and LS-F301 Multi-functional Controller for sensors displaying values(temperature, humidity, auto brightness, etc)



Picture for Temperature & Humidity Module LS-F201



Picture for Auto brightness sensor LS-F211



Picture for Temperature sensor LS-F202